

FP-RCH Flameproof Storage Water Heaters

The FP-RCH range of vented storage water heaters are suitable for single or multi-outlet use in washroom and laboratories that are designated as Zone 1 and Zone 2 hazardous areas, where the flammable atmosphere is a Group IIA, IIB or IIC gas.

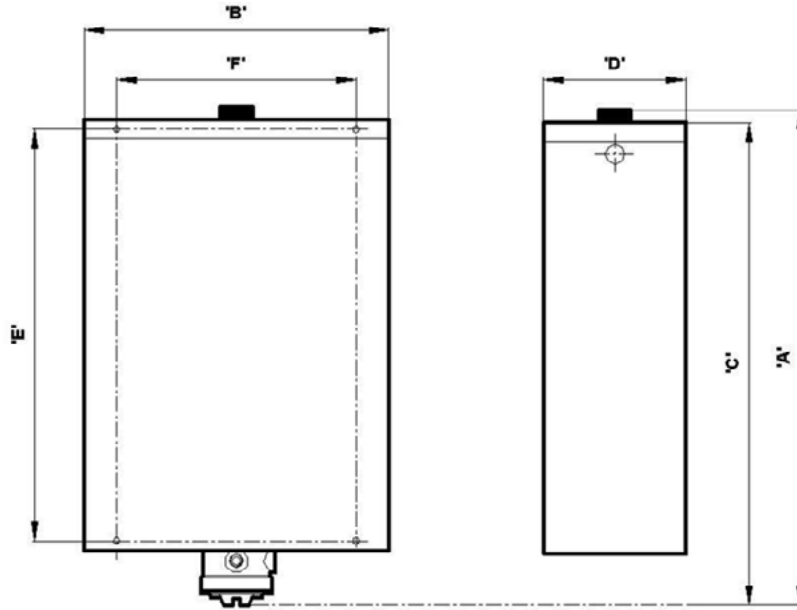


FEATURES

- Certified to ATEX standards
- Direct connection to the incoming mains water supply
- Easy wall mounting, with right or left hand water inlet connection
- Self contained cold water feed tank with integral ball valve
- Choice of capacity from 25 to 100 litres

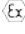
TYPICAL APPLICATIONS

- Washrooms in petrochemical installations
- Rest rooms on oil jetties
- Laboratories
- Offshore installations
- Chemical plants



Model	Capacity (litres)		Dimensions (mm)						Weight (kg)	
	Hot	Cold	A	B	C	D	E	F	Empty	Full
FP-RCH 25	25	8	780	470	815	210	670	320	24	57
FP-RCH 50	50	24	830	600	860	320	715	450	36	110
FP-RCH 75	75	24	1005	600	1030	320	890	450	41	140
FP-RCH 1000	100	24	1160	600	1190	320	1045	450	44	168

Certification

ATEX  II 2 G
 Ex d IIC T4 Gb Zone 1 and 2
 CU TR (formerly GOST); CSA; Inmetro; KGS; CNEEx; CCOE

Water Tank

Hot water storage and cold water feed tanks are both manufactured from copper sheet with brazed seams

Casing

Corrosion proofed, stove enamelled finish

Heating Element

High quality 80/20 nickel chrome resistance wire compacted in magnesium element oxide insulating powder and encased in Incoloy 825 metal sheath

Enclosure

Cast aluminium alloy with one M25 cable entry, external and internal earths, and screwed terminal cover

Controls

Box cut out for T class protection and float switch for element protection

Mounting

Wall mounting (minimum 1 metre above the highest draw off point)

Rating

2kW/240V